

INSTRUCTION MANUAL

ORIGINAL INSTRUCTIONS

For your personal safety,

READ and **UNDERSTAND** before using.

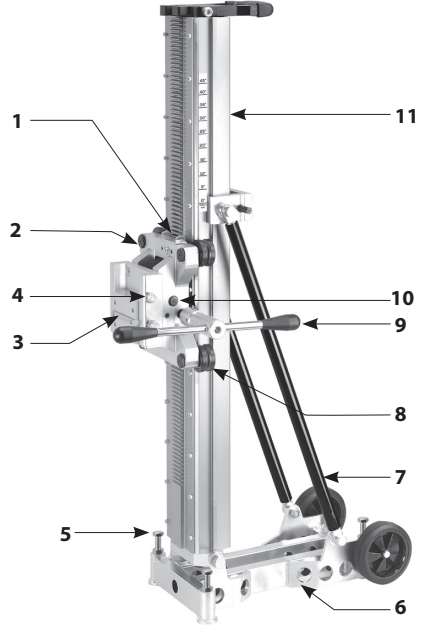
SAVE THESE INSTRUCTIONS FOR FUTURE REFERENCE.



DIAMOND CORE DRILL STANDS

Model	800mm Model	500mm Model	350mm Model	250mm Model
Capacity w/o extension spacers (mm)	Ø350	Ø350	Ø300	Ø250
Max. Capacity with extension spacers (mm)	Ø800	Ø500	352	N/A
Effective Stroke(mm)	760	690	660	660
Dimensions (LxWxH)(mm)	555 x 275 x 1035	480 x 240 x 1025	435 x 245 x 984	400 x 245 x 984
Net Weight(Not including crank handle)(kg)	26.5kg (58.42 Lbs)	19.08kg (41.97 Lbs)	16.6kg (36.52 Lbs)	14.9kg (31.68 Lbs)

1. Carriage Lock Lever
2. Adjustable Roller Axle Bolts
(on left side only)
3. Cradle
4. Cradle Lock Bolt
5. Leveling Bolts
6. Base
7. Buttress Bar
8. Guidance Roller
9. Crank Handle (Mounts on either side and
also doubles as a wrench for the Angle
Lock Clamp Bolt)
10. Clamp Bolt
11. Column



800mm Model

PS:

800mm /2M Model:

11. 2M column (1760mm stroke)

800mm /2.5M Model:

11. 2.5M column (2260mm stroke)

500mm /1.6M Model :

11. 1.6M column (1390mm stroke)

Optional: _____



160mm Water
Collector



Anchoring Plate
For 170, 250, 350, 500, and
800mm steel base models

EXTENSION SPACERS



200mm



150mm



100mm



45mm



200mm Model
Extension Mast Bracket

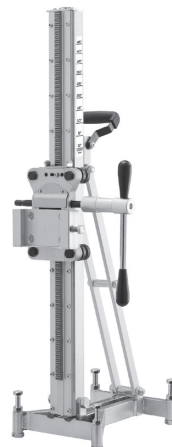
Model	200mm Model	170mm Model	250mm Aluminum Model
Capacity w/o extension spacers (mm)	Ø202	Ø170	Ø250
Max. Capacity with extension spacers (mm)	N/A	N/A	N/A
Effective Stroke(mm)	500	540	615
Dimensions (LxWxH)(mm)	361 x 250 x 890	460 x 215 x 815	360 x 240 x 960
Net Weight(Not including crank handle)(kg)	10.5kg (23.1 Lbs)	10.1kg (22.27 Lbs)	13.5kg (29.76 Lbs)



500 mm Model



350 mm Model



250 mm Model



200 mm Model



170 mm Model

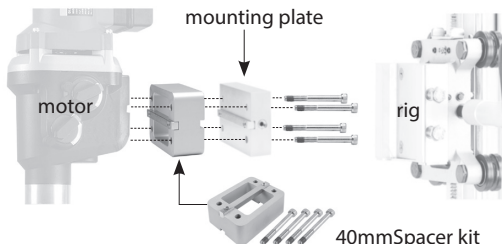


250mm Aluminum Model

Optional:



60mm clamp bracket for mounting hand-held drilling motors. Bolts directly to the standard mounting spacer



DIAMOND CORE DRILL STAND

Introduction:

This drill stand is designed to mount diamond core drilling motors by using a suitable mounting plate or clamp bracket. A standard 4 bolt mounting spacer is included with larger stands and a 60mm clamp bracket is provided with smaller stands. The drill stand guides the motor and diamond core bit so that it is possible to drill perfectly straight cuts in a safe and controlled manner.

The stand is also able to slant so that holes may be cored at an angle as required.

This stand must be securely fastened to the workpiece using a concrete anchor and fixing kit

WARNING: Do not attempt to use this stand if the mounting system does not fit perfectly to the drilling motor.

MOUNTING THE MOTOR TO THE DRILL STAND

Rig-Mounted Type Motors:

If the drill motor is the 4 bolt rig-mounted type, the drill stand's mounting plate must be bolted to the drill motor. The mounting tenon must fit securely in the slot in the back of the drill motor, then evenly tighten the four bolts.

This mounting plate now acts as a secure and accurate coupling between the drill motor and the drill stand.

The mounting plate now fits in the dovetail in the stand's cradle and is secured by the cradle lock bolt.

Hand-Held Type Motors:

If the drill motor is the hand-held type, the clamp bracket must be used. Then the motor's gearcase collar must be mounted in the clamp bracket. Generally, the drill motor's side handle will need to be first removed. To insert, first loosen the clamp bracket using the crank handle as a wrench, then insert the motor, turn to the desired orientation and then securely fasten the clamp bolt.

DRILLING STAND FUNCTIONAL DESCRIPTION

Fastening the drill rig

Once the desired position of the rig is determined, Use a concrete anchor to secure the rig.

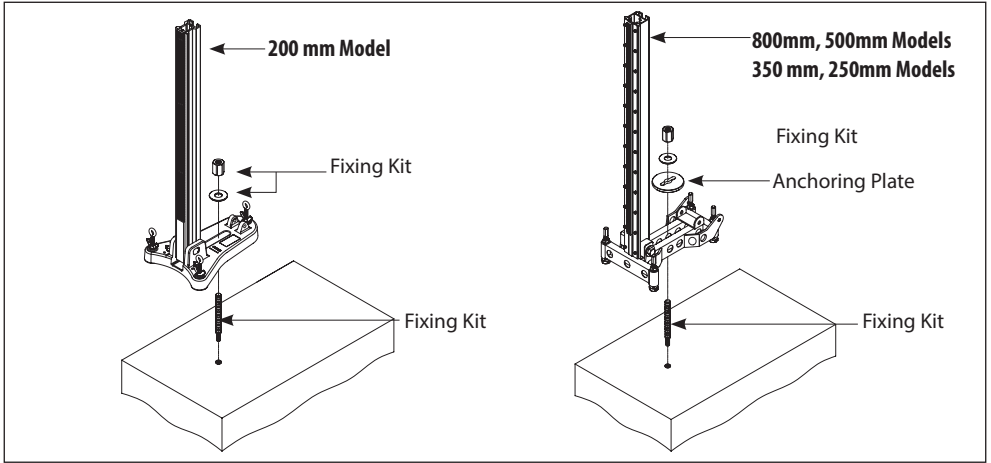
Drill a suitable sized hole for the anchor with a hammer drill.

Drive in the anchor.

Use the long threaded rod with the large washer and nut in the fixing kit to secure the base.

Before fully tightening the nut, use a spirit level to check if the stand is level. If needed, loosen the locknuts and adjust the four leveling bolts to achieve levelness. Then retighten the locknuts.

Now fully tighten the securing nut which affixes the base to the work surface.



WARNING: When anchoring to a brick surface, a special masonry anchor and brick fixing kit must be used. Using a concrete type drop-in anchor in brick could lead to the brick cracking and the anchor loosening!

NOTE: We recommend using the optional Anchoring Plate For 800mm, 500mm, 350 mm, 250mm , and 170mm models for the most secure possible fixing of the base to the workpiece. Place the anchoring plate on the base with the threaded rod through the hole. Then add the washer and nut. Tighten securely.

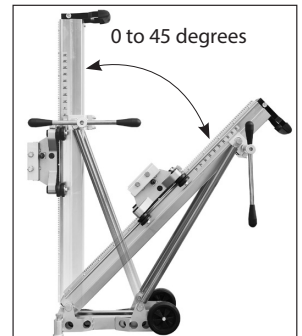
Note: If mounting on a wall, it is usually more convenient to secure the stand with the motor head removed. Using the 19mm combination wrench, loosen the cradle lock bolt on the carriage to lift the motor head up and away. Once the stand is fixed, the motor head may be re-installed on the stand. Make sure to securely tighten the cradle lock bolt(s).

ADJUSTING THE DRILLING ANGLE

The drilling angle can be tilted from 0 to 45 degrees. To adjust the angle, use the crank handle as a wrench and loosen the angle clamp bolt. Refer to the scale on the column indicating the angle. Adjust to the desired angle and tighten the clamp.

CAUTION: Do not overtighten the clamp. Only tighten the necessary amount to make the clamp secure. Overtightening could distort the column.

200mm Model folds down completely for easy storage.



CARRIAGE LOCK

On the 170mm, 250mm, 350mm, 500mm and 800mm models, Slide the carriage lock lever to the left to lock the carriage in place. Slide the lever to the right to release the carriage.

On the 200mm and 250mm Aluminum Models, the carriage lock is a screw on the right side of the carriage. Tighten to lock, loosen to release.

CAUTION: Hold the crank lever or motor head whenever releasing the carriage lock. It could slam down causing possible injury or damage to the bit or machine.

REDUCTION GEARING

On the 500mm and 800mm Models stands, there are two crank spindles:

One spindle is for for standard cranking and one for reduced gear ratio cranking.

The reduced gear ratio allows the operator to drill with greatly reduced effort when using large diameter core bits.

To switch from standard to reduced gear ratio cranking, simply remove the crank handle from the main spindle and connect to the forward spindle on the left side.

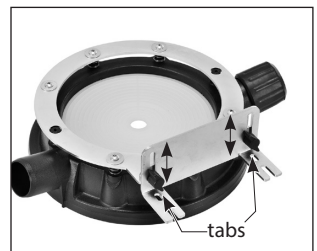
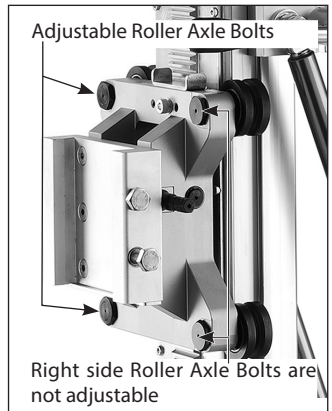
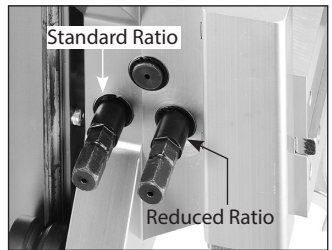
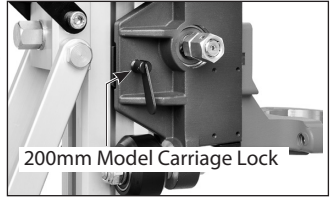
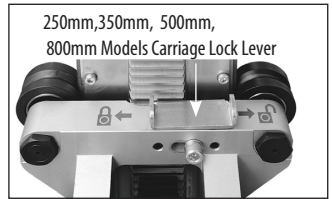
ADJUSTING THE DRILLING STAND GUIDANCE

Loose guidance will cause the bit to run out-of-true and result in poor performance, sticking and possible damage to the bit. If the rollers can be turned by hand with the carriage locked, they are too loose.

To adjust the guidance, the two guide rollers on the left side are on eccentric shafts. Turn the eccentric roller axle bolt until the clearance is taken up on each roller in turn. Turn just enough so that the roller cannot be turned by hand. Now test the tightness of the carriage by cranking it up and down. There should be no free-play, yet no binding throughout its travel.

200mm Model MOUNTING THE OPTIONAL WATER COLLECTOR RING

Mount the ring to base by aligning the 2 tabs, adjusting the height, and tightening the thumbscrews. The first time a membrane is used, it must be cut to size by the core bit. For other sizes, other membranes must be



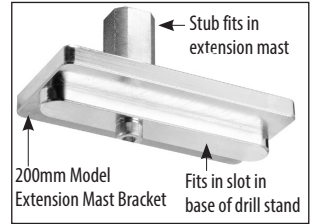
prepared in the same fashion. Connect the wet vacuum cleaner to either of the 2 ports and use the plug on the other, unused port.

REPLACING MEMBRANES

Flip the water collector ring upside down and remove the 6 screws. This will allow the membrane and the mounting ring to be removed.

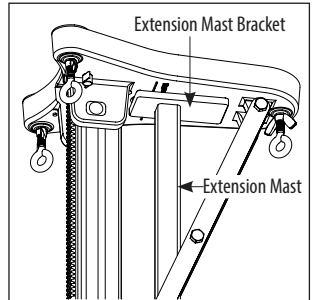
200mm Model OPTIONAL EXTENSION MAST BRACKET

The extension mast bracket serves as a stable mounting point for the extension mast to press upon. Place the extension mast on the stub of the bracket and the bracket in the slot of the base, then extend the mast to brace it against a solid immovable surface for secure fixing of the drill stand.



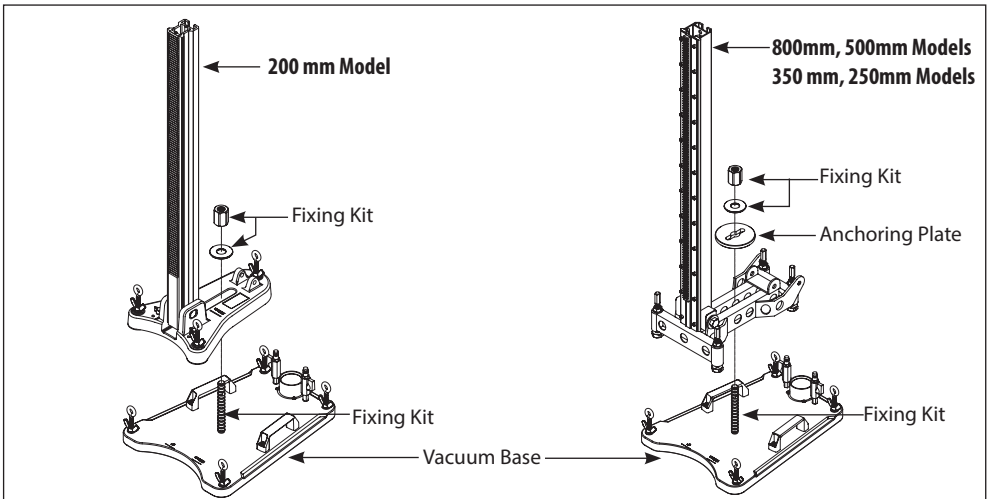
OPTIONAL VACUUM BASE

The vacuum base is available for use with the 200mm, 250mm, 350mm and 500mm Models. Use the fixing kit supplied with the vacuum base to mount the vacuum base to the base of the drill stand. The 250mm, 350mm and 500mm Models should use the anchoring plate. Place the base of the drill stand so that it is centered on the vacuum base. Follow the instructions included with the vacuum base.

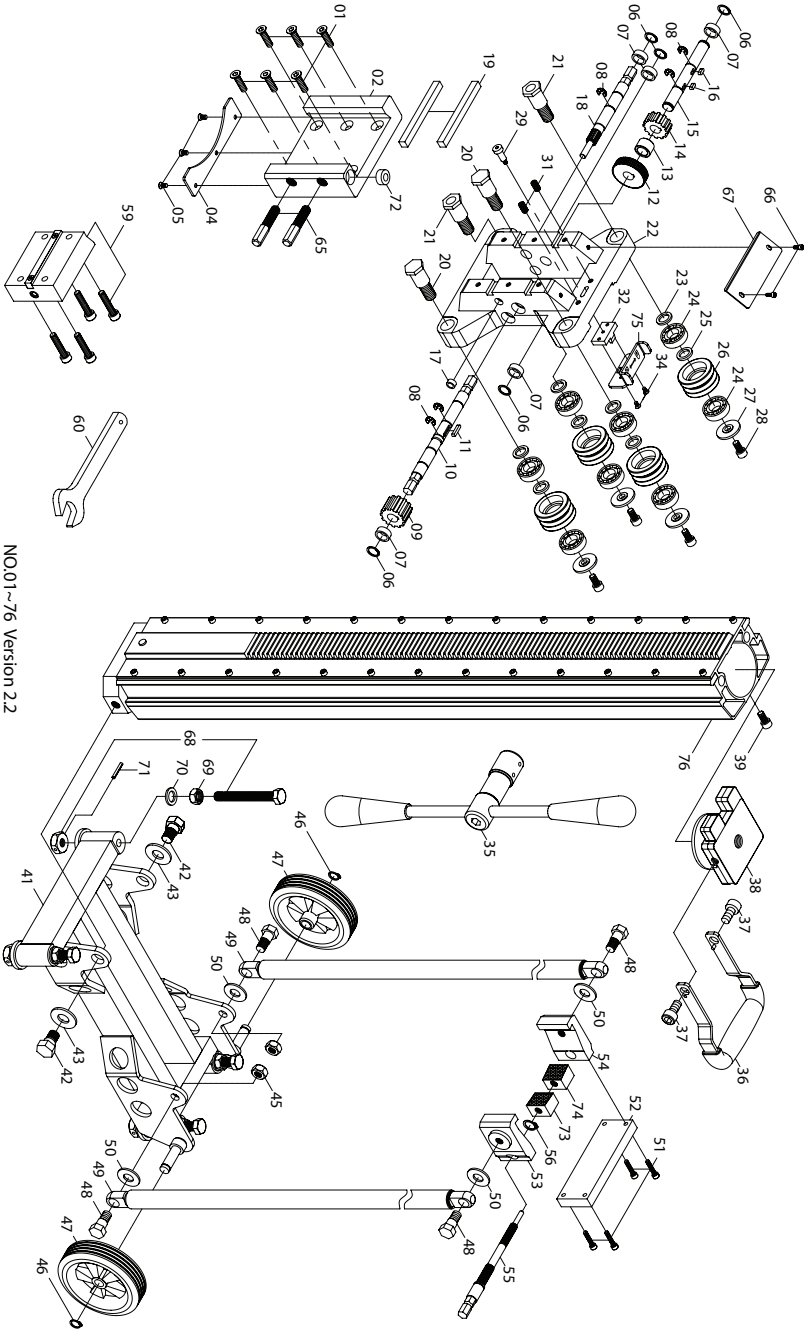


WARNING: Always use additional safety chains when drilling horizontally.

WARNING: Never drill inverted when using the vacuum base.



Exploded View (800mm/1M Model)

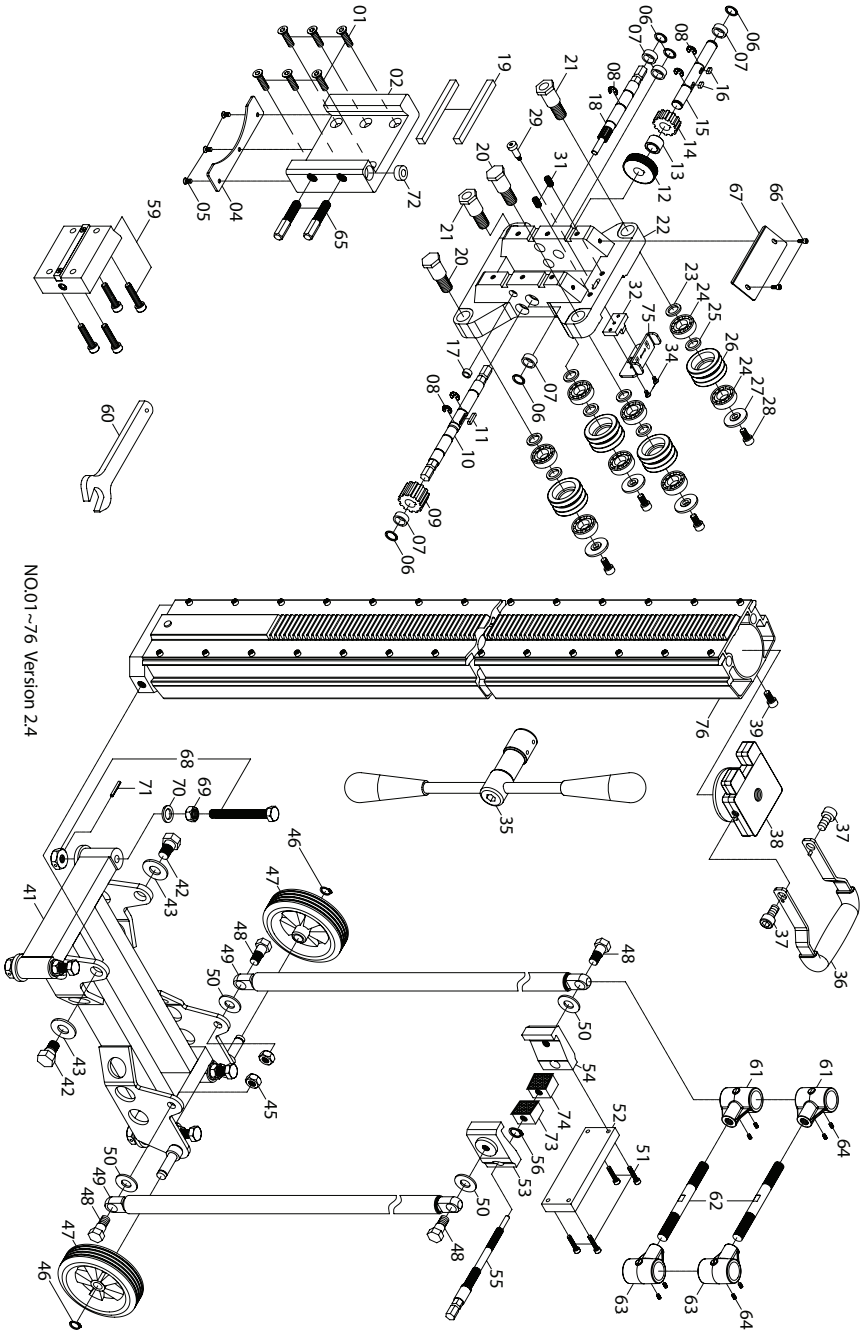


NO.01~76 Version 2.2

Parts List (800mm /1M Model)

NO.	Parts Name	Q'TY	NO.	Parts Name	Q'TY
NO.	Parts Name	Q'TY	37	SOCKET CAP SCREW (M12x16xP1.75)	2
1	FLAT HEAD SOCKET CAP SCREW (M8x30xP1.25)	6	38	TANK COVER LID	1
2	CRADLE	1	39	SOCKET CAP SCREW (M5x10xP0.8)	1
3	N/A	-	40	N/A	-
4	CRADLE PLATE	1	41	BASE	1
5	FLAT HEAD MACHINE SCREW (M5x12xP0.8)	3	42	SHOULDER BOLT	2
6	INTERNAL CIRCLIP (IS15)	5	43	FLAT WASHER (5/8"xØ30x3)	2
7	BUSHING (Ø15xØ20x10)	5	44	N/A	-
8	E-CLIP (E-12)	5	45	NYLOCK NUT (M12xP1.75)	2
9	CRANK GEAR (M2.5x12T)	1	46	EXTERNAL CIRCLIP (S-13)	2
10	CRANK SPINDLE	1	47	WHEEL	2
11	PARALLEL KEY (4x4x20)	1	48	SHOULDER BOLT	4
12	SPINDLE GEAR (M1.0x46T)	1	49	BUTTRESS BAR (650MM)	2
13	SHAFT RACE (Ø15xØ22x15)	1	50	FLAT WASHER (Ø14.3xØ32x2.5)	4
14	SPINDLE GEAR (M2.5x12T)	1	51	SOCKET CAP SCREW (M5x25xP0.8)	4
15	INTERMEDIATE SHAFT	1	52	CLAMP PLATE	1
16	PARALLEL KEY (4x4x10)	2	53	CLAMP CLAW-LEFT	1
17	BUSHING (Ø8xØ12x6)	1	54	CLAMP CLAW-RIGHT	1
18	REDUCTION CRANK PINION	1	55	ANDLE CLAMP BOLT	1
19	MOUNTING TENON (10x10x115)	2	56	EXTERNAL CIRCLIP (S-15)	1
20	AXLE SHAFT	2	57~58	N/A	-
21	ECCENTRIC SHAFT	2	59	MOUNTING SPACER	1
22	CARRIAGE	1	60	WRENCH (M19)	1
23	AXLE SPACER C	4	61~64	N/A	-
24	BALL BEARING (6202)	8	65	CRADLE LOCK BOLT (M12xP1.75x70L)	2
25	AXLE SPACER B	4	66	SOCKET CAP SCREW (M5x8xP0.8)	2
26	GUIDE ROLLER	4	67	FENCE	1
27	AXLE SPACER A	4	68	LEVELING SCREW	4
28	SOCKET CAP SCREW (M8x16xP1.25)	4	69	HEX NUT (M12xP1.75)	4
29	FENCE PIVOT BOLT (M5xP0.8x23.7L)	1	70	FLAT WASHER (Ø12.2xØ23x2)	4
30	N/A	-	71	ROLL PIN (Ø4x25)	4
31	DETENT UNIT (M8x16.75xP1.25)	2	72	BULLS-EYE LEVEL	1
32	CARRIAGE LOCK	1	73	CLAMP WEDGE-LEFT	1
33	N/A	-	74	CLAMP WEDGE-RIGHT	1
34	FLAT HEAD MACHINE SCREW (M4x8xP0.7)	2	75	CARRIAGE LOCK LEVER	1
35	CRANK HANDLE	1	76	COLUMN (1000MM)	1
36	FRONT HANDLE	1			

Exploded View (800mm/2M Model)

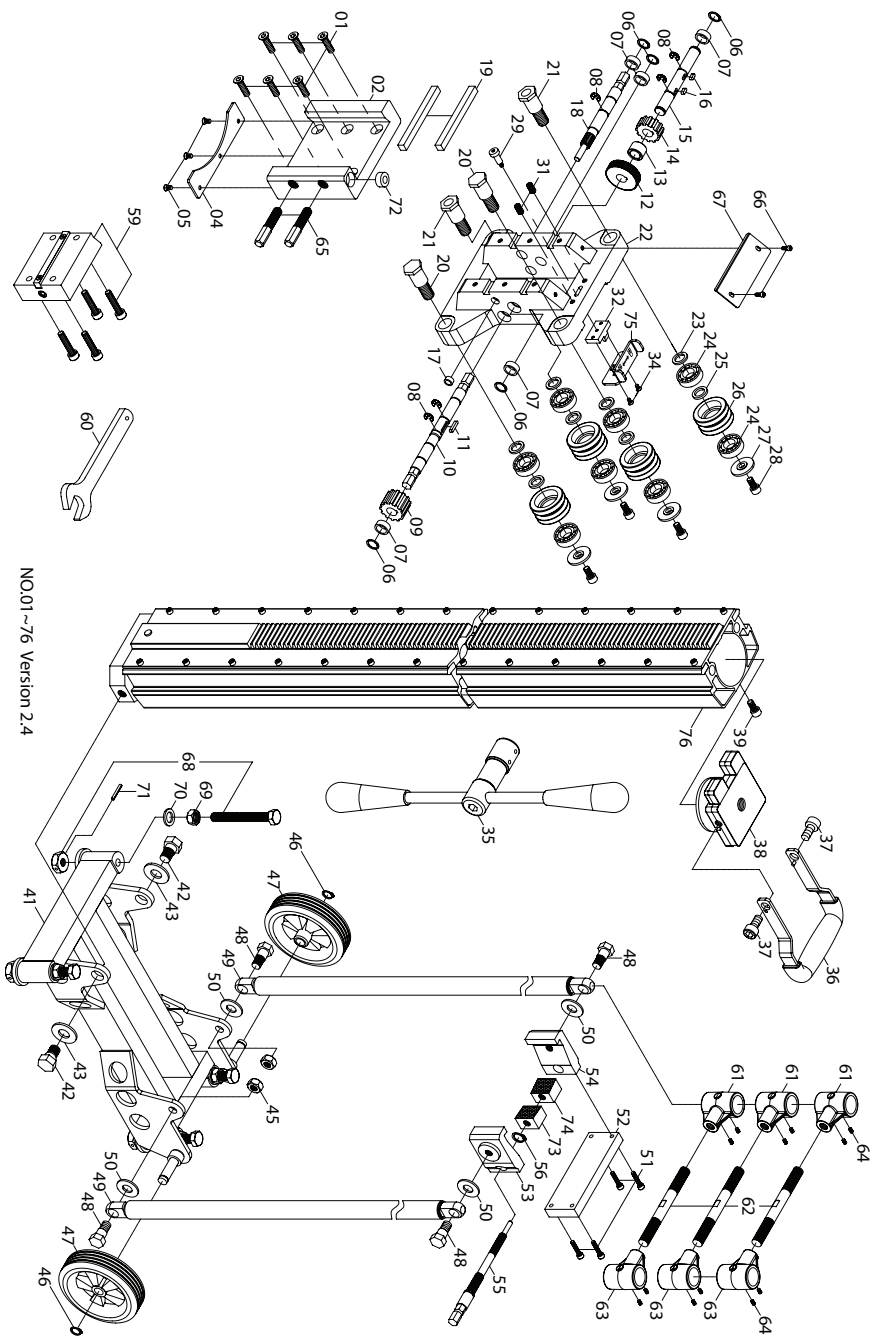


NO.01~76 Version 2.4

Parts List (800mm /2M Model)

NO.	Parts Name	Q'TY	NO.	Parts Name	Q'TY
1	FLAT HEAD SOCKET CAP SCREW (M8x30xP1.25)	6	39	SOCKET CAP SCREW (M5x10xP0.8)	1
2	CRADLE	1	40	N/A	-
3	N/A	-	41	BASE	1
4	CRADLE PLATE	1	42	SHOULDER BOLT	2
5	FLAT HEAD MACHINE SCREW (M5x12xP0.8)	3	43	FLAT WASHER (5/8"xØ30x3)	2
6	INTERNAL CIRCLIP (IS15)	5	44	N/A	-
7	BUSHING (Ø15xØ20x10)	5	45	NYLOCK NUT (M12xP1.75)	2
8	E-CLIP (E-12)	5	46	EXTERNAL CIRCLIP (S-13)	2
9	CRANK GEAR (M2.5x12T)	1	47	WHEEL	2
10	CRANK SPINDLE	1	48	SHOULDER BOLT	4
11	PARALLEL KEY (4x4x20)	1	49	BUTTRESS BAR (1000MM)	2
12	SPINDLE GEAR (M1.0x46T)	1	50	FLAT WASHER (Ø14.3xØ32x2.5)	4
13	SHAFT RACE (Ø15xØ22x15)	1	51	SOCKET CAP SCREW (M5x25xP0.8)	4
14	SPINDLE GEAR (M2.5x12T)	1	52	CLAMP PLATE	1
15	INTERMEDIATE SHAFT	1	53	CLAMP CLAW-LEFT	1
16	PARALLEL KEY (4x4x10)	2	54	CLAMP CLAW-RIGHT	1
17	BUSHING (Ø8xØ12x6)	1	55	ANDLE CLAMP BOLT	1
18	REDUCTION CRANK PINION	1	56	EXTERNAL CIRCLIP (S-15)	1
19	MOUNTING TENON (10x10x115)	2	57	N/A	-
20	AXLE SHAFT	2	58	N/A	-
21	ECCENTRIC SHAFT	2	59	MOUNTING SPACER	1
22	CARRIAGE	1	60	WRENCH (M19)	1
23	AXLE SPACER C	4	61	BRACING COLLAR-L	2
24	BALL BEARING (6202)	8	62	TURNBUCKLE SHAFT (M14xP2.0x142L)	2
25	AXLE SPACER B	4	63	BRACING COLLAR-R	2
26	GUIDE ROLLER	4	64	SOCKET SET SCREW (M5x6xP0.8)	8
27	AXLE SPACER A	4	65	CRADLE LOCK BOLT (M12xP1.75x70L)	2
28	SOCKET CAP SCREW (M8x16xP1.25)	4	66	SOCKET CAP SCREW (M5x8xP0.8)	2
29	FENCE PIVOT BOLT (M5xP0.8x23.7L)	1	67	FENCE	1
30	N/A	-	68	LEVELING SCREW	4
31	DETENT UNIT (M8x16.75xP1.25)	2	69	HEX NUT (M12xP1.75)	4
32	CARRIAGE LOCK	1	70	FLAT WASHER (Ø12.2xØ23x2)	4
33	N/A	-	71	ROLL PIN (Ø4x25)	4
34	FLAT HEAD MACHINE SCREW (M4x8xP0.7)	2	72	BULLS-EYE LEVEL	1
35	CRANK HANDLE	1	73	CLAMP WEDGE-LEFT	1
36	FRONT HANDLE	1	74	CLAMP WEDGE-RIGHT	1
37	SOCKET CAP SCREW (M12x16xP1.75)	2	75	CARRIAGE LOCK LEVER	1
38	TANK COVER LID	1	76	COLUMN (2000MM)	1

Exploded View (800mm/2.5M Model)

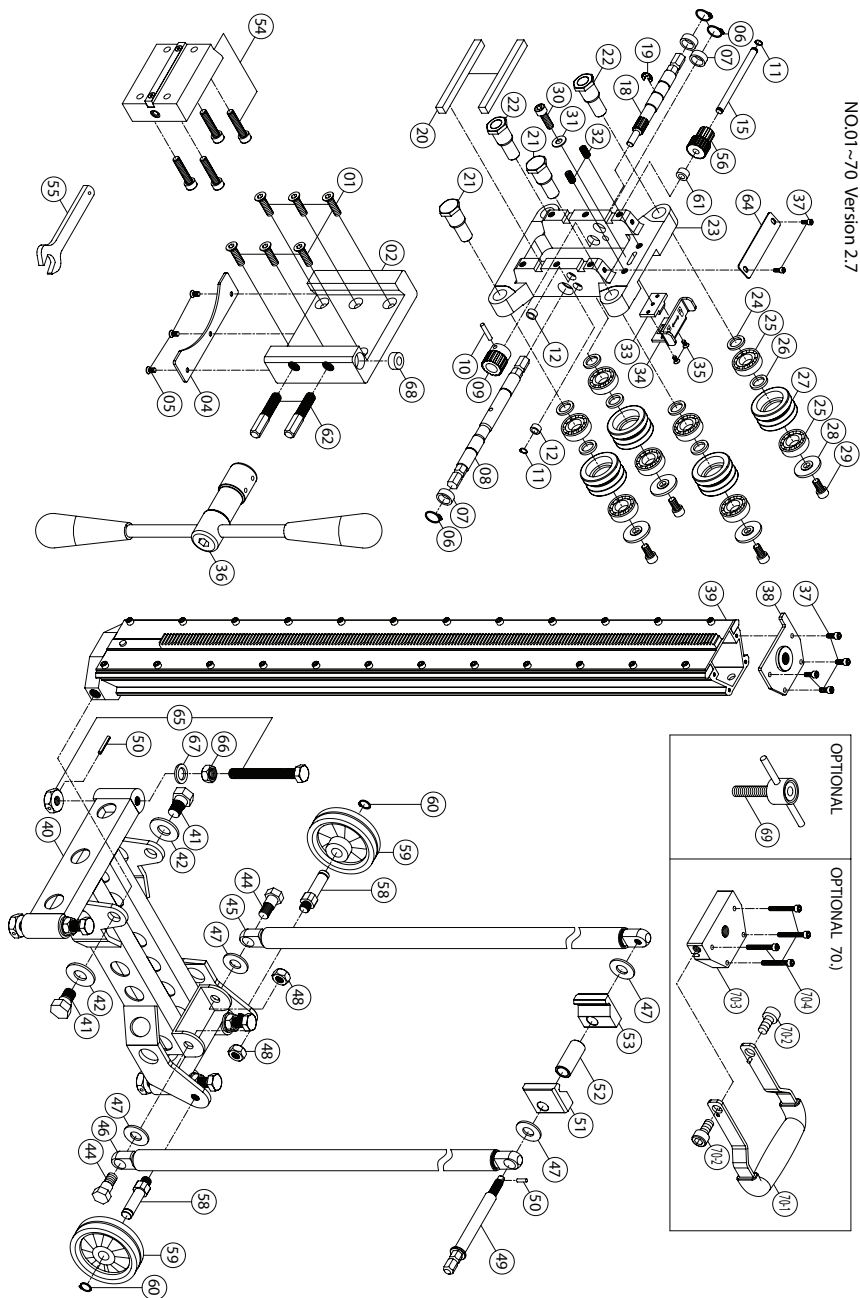


Parts List (800mm /2.5M Model)

NO.	Parts Name	Q'TY	NO.	Parts Name	Q'TY
1	FLAT HEAD SOCKET CAP SCREW (M8x30xP1.25)	6	39	SOCKET CAP SCREW (M5x10xP0.8)	1
2	CRADLE	1	40	N/A	-
3	N/A	-	41	BASE	1
4	CRADLE PLATE	1	42	SHOULDER BOLT	2
5	FLAT HEAD MACHINE SCREW (M5x12xP0.8)	3	43	FLAT WASHER (5/8"xØ30x3)	2
6	INTERNAL CIRCLIP (IS15)	5	44	N/A	-
7	BUSHING (Ø15xØ20x10)	5	45	NYLOCK NUT (M12xP1.75)	2
8	E-CLIP (E-12)	5	46	EXTERNAL CIRCLIP (S-13)	2
9	CRANK GEAR (M2.5x12T)	1	47	WHEEL	2
10	CRANK SPINDLE	1	48	SHOULDER BOLT	4
11	PARALLEL KEY (4x4x20)	1	49	BUTTRESS BAR (1600MM)	2
12	SPINDLE GEAR (M1.0x46T)	1	50	FLAT WASHER (Ø14.3xØ32x2.5)	4
13	SHAFT RACE (Ø15xØ22x15)	1	51	SOCKET CAP SCREW (M5x25xP0.8)	4
14	SPINDLE GEAR (M2.5x12T)	1	52	CLAMP PLATE	1
15	INTERMEDIATE SHAFT	1	53	CLAMP CLAW-LEFT	1
16	PARALLEL KEY (4x4x10)	2	54	CLAMP CLAW-RIGHT	1
17	BUSHING (Ø8xØ12x6)	1	55	ANDLE CLAMP BOLT	1
18	REDUCTION CRANK PINION	1	56	EXTERNAL CIRCLIP (S-15)	1
19	MOUNTING TENON (10x10x115)	2	57	N/A	-
20	AXLE SHAFT	2	58	N/A	-
21	ECCENTRIC SHAFT	2	59	MOUNTING SPACER	1
22	CARRIAGE	1	60	WRENCH (M19)	1
23	AXLE SPACER C	4	61	BRACING COLLAR-L	3
24	BALL BEARING (6202)	8	62	TURNBUCKLE SHAFT (M14xP2.0x142L)	3
25	AXLE SPACER B	4	63	BRACING COLLAR-R	3
26	GUIDE ROLLER	4	64	SOCKET SET SCREW (M5x6xP0.8)	12
27	AXLE SPACER A	4	65	CRADLE LOCK BOLT (M12xP1.75x70L)	2
28	SOCKET CAP SCREW (M8x16xP1.25)	4	66	SOCKET CAP SCREW (M5x8xP0.8)	2
29	FENCE PIVOT BOLT (M5xP0.8x23.7L)	1	67	FENCE	1
30	N/A		68	LEVELING SCREW	4
31	DETENT UNIT (M8x16.75xP1.25)	2	69	HEX NUT (M12xP1.75)	4
32	CARRIAGE LOCK	1	70	FLAT WASHER (Ø12.2xØ23x2)	4
33	N/A	-	71	ROLL PIN (Ø4x25)	4
34	FLAT HEAD MACHINE SCREW (M4x8xP0.7)	2	72	BULLS-EYE LEVEL	1
35	CRANK HANDLE	1	73	CLAMP WEDGE-LEFT	1
36	FRONT HANDLE	1	74	CLAMP WEDGE-RIGHT	1
37	SOCKET CAP SCREW (M12x16xP1.75)	2	75	CARRIAGE LOCK LEVER	1
38	TANK COVER LID	1	76	COLUMN (2500MM)	1

Exploded View (500mm/1M Model)

NO.01~70 Version 2.7

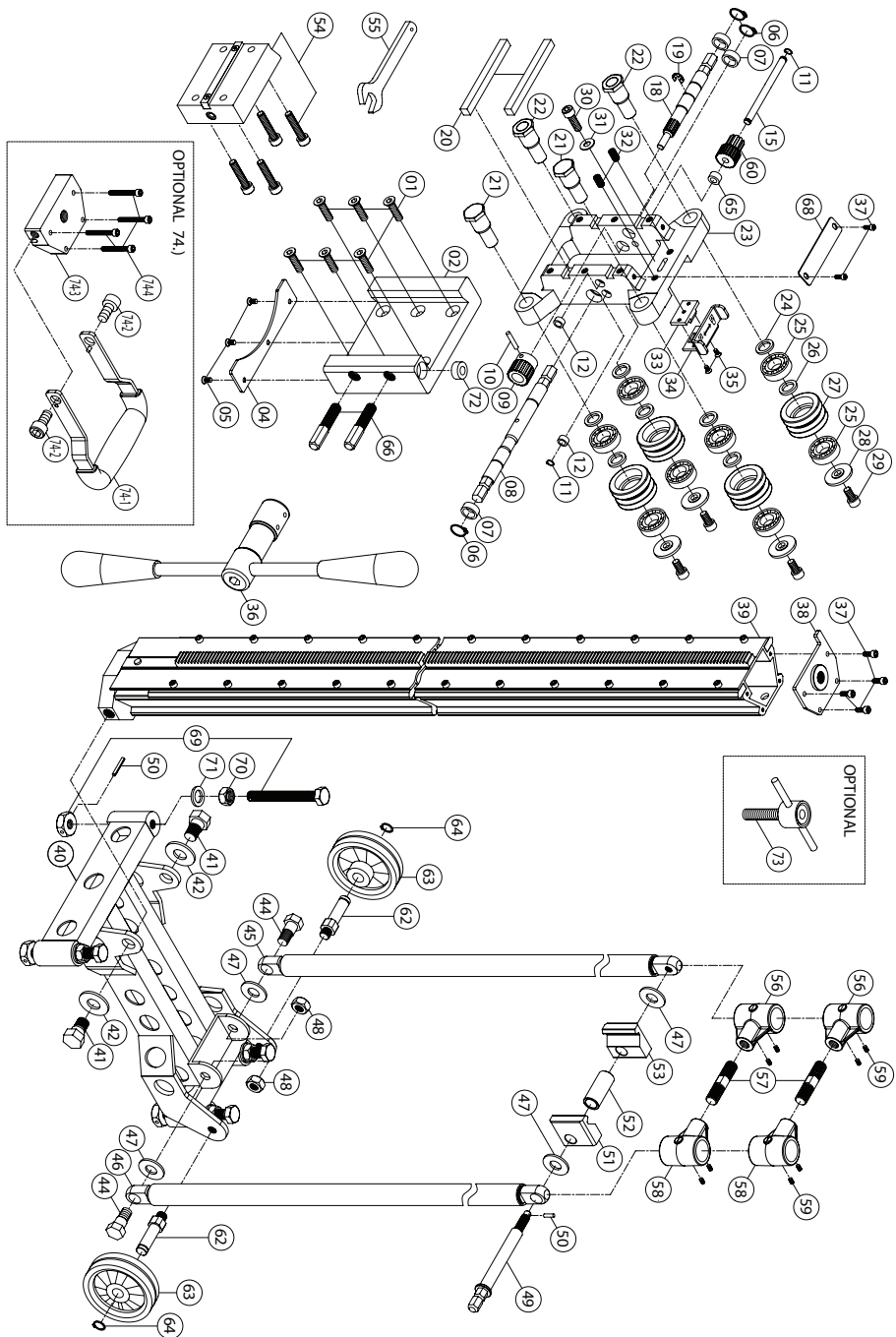


Parts List (500mm/1M Model)

NO.	Parts Name	Q'TY	NO.	Parts Name	Q'TY
1	FLAT HEAD SOCKET CAP SCREW (M8x30xP1.25)	6	39	COLUMN (900MM)	1
2	CRADLE	1	40	BASE	1
3	N/A	-	41	SHOULDER BOLT	2
4	CRADLE PLATE	1	42	FLAT WASHER (5/8"xØ30x3)	2
5	FLAT HEAD MACHINE SCREW (M5x12xP0.8)	3	43	N/A	-
6	EXTERNAL CIRCLIP (S-15)	3	44	SHOULDER BOLT	2
7	BUSHING (Ø15xØ20x10)	3	45	BUTTRESS BAR (L-650MM)	1
8	CRANK SPINDLE	1	46	BUTTRESS BAR (R-650MM)	1
9	CRANK GEAR (M1.5x16T)	1	47	FLAT WASHER (Ø14xØ32x2.5)	4
10	ROLL PIN (Ø5x25)	1	48	NYLOCK NUT (M12xP1.75)	2
11	EXTERNAL CIRCLIP (S-8)	2	49	ANGLE LOCK	1
12	BUSHING (Ø8xØ12x6)	2	50	ROLL PIN (Ø4x25)	5
13~14	N/A	-	51	CLAMP CLAW-LEFT	1
15	INTERMEDIATE SHAFT	1	52	SPACER	1
16~17	N/A	-	53	CLAMP CLAW-RIGHT	1
18	REDUCTION CRANK PINION	1	54	MOUNTING SPACER	1
19	E-CLIP (E-12)	1	55	WRENCH (M19)	1
20	MOUNTING TENON (10x10x115)	2	56	REDUCTION GEAR SET	1
21	AXLE SHAFT	2	57	N/A	
22	ECCENTRIC SHAFT	2	58	ROLLER AXLE	2
23	CARRIAGE	1	59	WHEEL	2
24	AXLE SPACER C	4	60	EXTERNAL CIRCLIP (S-13)	2
25	BALL BEARING (6202)	8	61	HEAD LOCKING KNOB (Ø8xØ14x7.5)	1
26	AXLE SPACER B	4	62	CRADLE LOCK BOLT (M12xP1.75x70L)	2
27	GUIDE ROLLER	4	63	N/A	
28	AXLE SPACER A	4	64	FENCE	1
29	SOCKET CAP SCREW (M8x16xP1.25)	4	65	LEVELING SCREW	4
30	SOCKET CAP SCREW (M5x20xP0.8)	1	66	HEX NUT (M12xP1.75)	4
31	FLAT WASHER (Ø5xØ12x1)	1	67	FLAT WASHER (Ø12.2xØ23x2)	4
32	DETENT UNIT (M8x16.75xP1.25)	2	68	BULLS-EYE LEVEL	1
33	CARRIAGE LOCK	1	69	T-HANDLE VISE SCREW (M16xP2.0)	1
34	CARRIAGE LOCK LEVER	1	70	AUXILIARY HANDLE SET	1
35	FLAT HEAD MACHINE SCREW (M4x6xP0.7)	2	70-1	FRONT HANDLE	1
36	CRANK HANDLE	1	70-2	SOCKET CAP SCREW (M12x16xP1.75)	2
37	SOCKET CAP SCREW (M5x10xP0.8)	6	70-3	COLUMN CAP	1
38	COLUMN CAP	1	70-4	SOCKET CAP SCREW (M5x35xP0.8)	4

Exploded View (500mm/1.6M Model)

NO.01~74 Version 2.7

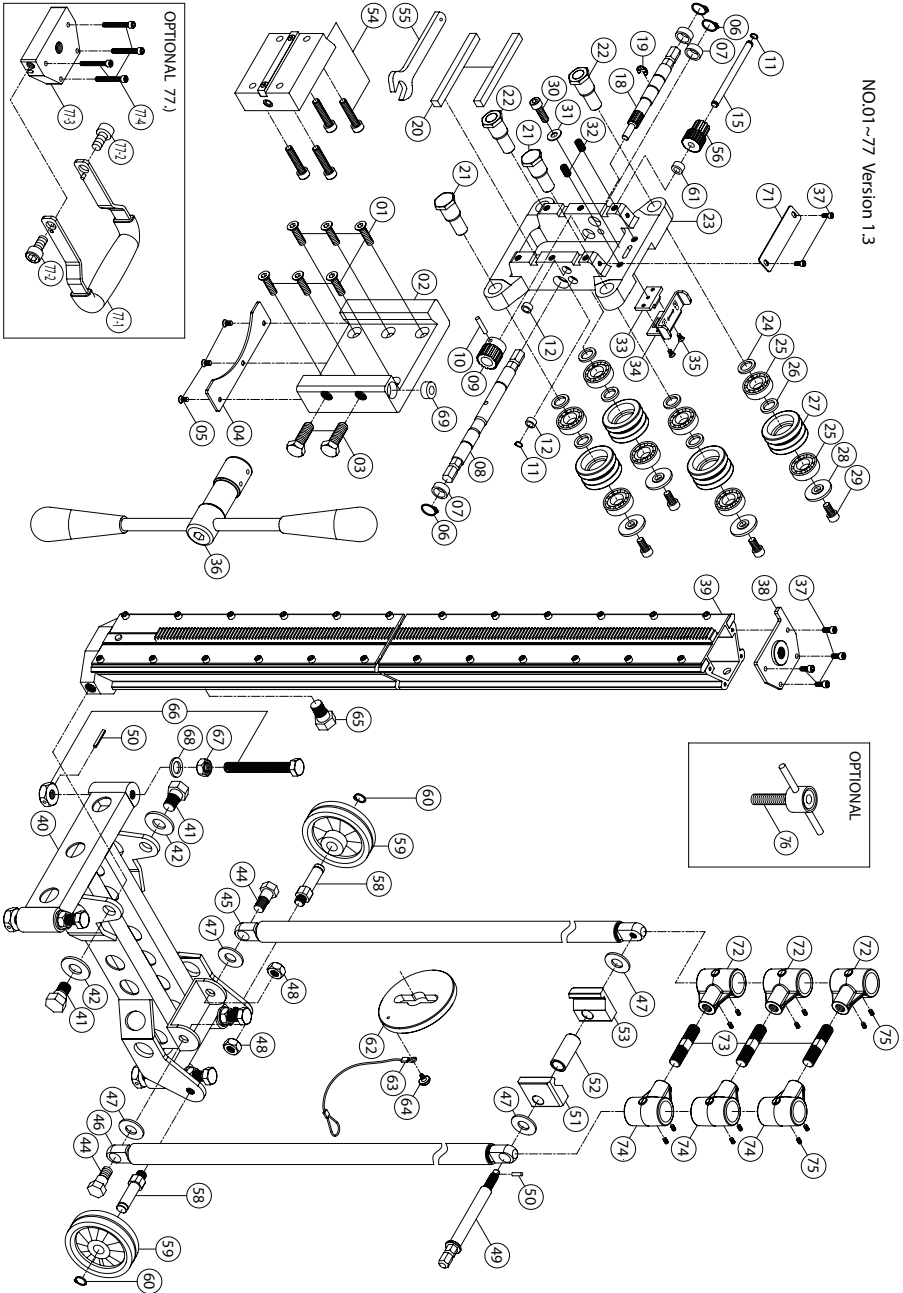


Parts List (500mm/1.6M Model)

NO.	Parts Name	Q'TY	NO.	Parts Name	Q'TY
1	FLAT HEAD SOCKET CAP SCREW (M8x30xP1.25)	6	41	SHOULDER BOLT	2
2	CRADLE	1	42	FLAT WASHER (5/8"xØ30x3)	2
3	N/A	-	43	N/A	-
4	CRADLE PLATE	1	44	SHOULDER BOLT	2
5	FLAT HEAD MACHINE SCREW (M5x12xP0.8)	3	45	BUTTRESS BAR (L-1000MM)	1
6	INTERNAL CIRCLIP (IS15)	3	46	BUTTRESS BAR (R-1000MM)	1
7	BUSHING (Ø15xØ20x10)	3	47	FLAT WASHER (Ø14xØ32x2.5)	4
8	CRANK SPINDLE	1	48	NYLOCK NUT (M12xP1.75)	2
9	CRANK GEAR (M1.5x16T)	1	49	ANGLE LOCK	1
10	ROLL PIN (Ø5x25)	1	50	ROLL PIN (Ø4x25)	5
11	EXTERNAL CIRCLIP (S-8)	2	51	CLAMP CLAW-LEFT	1
12	BUSHING (Ø8xØ12x6)	2	52	SPACER	1
13~14	N/A	-	53	CLAMP CLAW-RIGHT	1
15	INTERMEDIATE SHAFT	1	54	MOUNTING SPACER	1
16~17	N/A	-	55	WRENCH (M19)	1
18	REDUCTION CRANK PINION	1	56	BRACING COLLAR-L	2
19	E-CLIP (E-12)	1	57	TURNBUCKLE SHAFT (M14xP2.0x60L)	2
20	MOUNTING TENON (10x10x115)	2	58	BRACING COLLAR-R	2
21	AXLE SHAFT	2	59	SOCKET SET SCREW (M5x6xP0.8)	8
22	ECCENTRIC SHAFT	2	60	REDUCTION GEAR SET	1
23	CARRIAGE	1	61	N/A	-
24	AXLE SPACER C	4	62	ROLLER AXLE	2
25	BALL BEARING (6202)	8	63	WHEEL	2
26	AXLE SPACER B	4	64	EXTERNAL CIRCLIP (S-13)	2
27	GUIDE ROLLER	4	65	HEAD LOCKING KNOB (Ø8xØ14x7.5)	1
28	AXLE SPACER A	4	66	CRADLE LOCK BOLT (M12xP1.75x70L)	2
29	SOCKET CAP SCREW (M8x16xP1.25)	4	67	N/A	-
30	SOCKET CAP SCREW (M5x20xP0.8)	1	68	FENCE	1
31	FLAT WASHER (Ø5xØ12x1)	1	69	LEVELING SCREW	4
32	DETENT UNIT (M8x16.75xP1.25)	2	70	HEX NUT (M12xP1.75)	4
33	CARRIAGE LOCK	1	71	FLAT WASHER (Ø12.2xØ23x2)	4
34	CARRIAGE LOCK LEVER	1	72	BULLS-EYE LEVEL	1
35	FLAT HEAD MACHINE SCREW (M4x6xP0.7)	2	73	T-HANDLE VISE SCREW (M16xP2.0)	1
36	CRANK HANDLE	1	74	AUXILIARY HANDLE SET	1
37	SOCKET CAP SCREW (M5x10xP0.8)	6	74-1	FRONT HANDLE	1
38	COLUMN CAP	1	74-2	SOCKET CAP SCREW (M12x16xP1.75)	2
39	COLUMN (1600MM)	1	74-3	COLUMN CAP	1
40	BASE	1	74-4	SOCKET CAP SCREW (M5x35xP0.8)	4

Exploded View (500mm/2M Model)

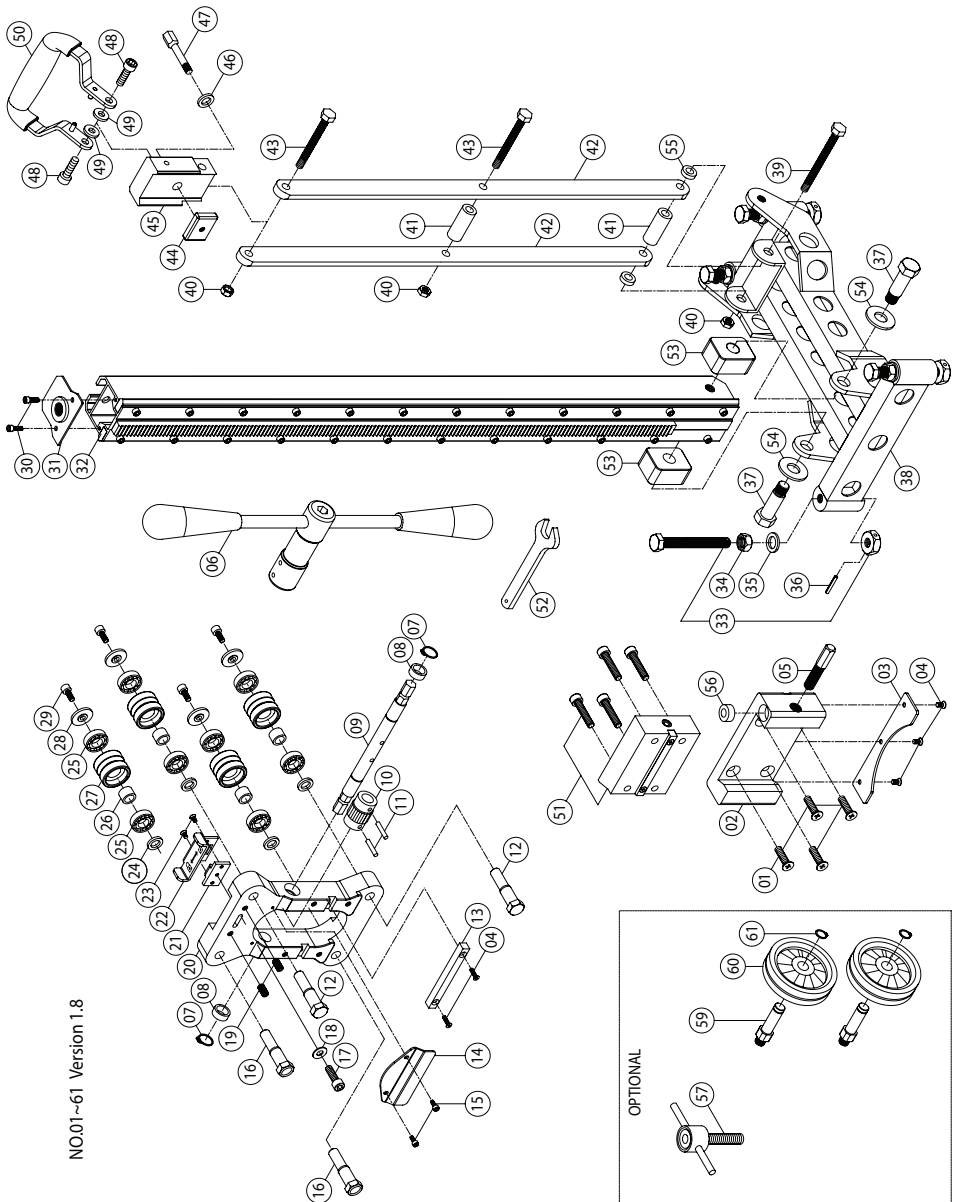
NO.01-77 Version 1.3



Parts List (500mm/2M Model)

NO.	Parts Name	Q'TY	NO.	Parts Name	Q'TY
1	FLAT HEAD SOCKET CAP SCREW (M8x30xP1.25)	6	43	N/A	-
2	CRADLE	1	44	SHOULDER BOLT	2
3	CRADLE LOCK BOLT (M12xP1.75x40L)	2	45	BUTTRESS BAR (L-1600MM)	1
4	CRADLE PLATE	1	46	BUTTRESS BAR (R-1600MM)	1
5	FLAT HEAD MACHINE SCREW (M5x12xP0.8)	3	47	FLAT WASHER (Ø14xØ32x2.5)	4
6	EXTERNAL CIRCLIP (S-15)	3	48	NYLOCK NUT (M12xP1.75)	2
7	BUSHING (Ø15xØ20x10)	3	49	ANGLE LOCK	1
8	CRANK SPINDLE	1	50	ROLL PIN (Ø4x25)	5
9	CRANK GEAR (M1.5x16T)	1	51	CLAMP CLAW-LEFT	1
10	ROLL PIN (Ø5x25)	1	52	SPACER	1
11	EXTERNAL CIRCLIP (S-8)	2	53	CLAMP CLAW-RIGHT	1
12	BUSHING (Ø8xØ12x6)	2	54	MOUNTING SPACER	1
13~14	N/A	-	55	WRENCH (M19)	1
15	INTERMEDIATE SHAFT	1	56	REDUCTION GEAR SET	1
16~17	N/A	-	57	N/A	-
18	REDUCTION CRANK PINION	1	58	ROLLER AXLE	2
19	E-CLIP (E-12)	1	59	WHEEL	2
20	MOUNTING TENON (10x10x115)	2	60	EXTERNAL CIRCLIP (S-13)	2
21	AXLE SHAFT	2	61	HEAD LOCKING KNOB (Ø8xØ14x7.5)	1
22	ECCENTRIC SHAFT	2	62	ANCHORING PLATE	1
23	CARRIAGE	1	63	TETHER	1
24	AXLE SPACER C	4	64	LOCK BUTTON	1
25	BALL BEARING (6202)	8	65	SHOULDER BOLT	1
26	AXLE SPACER B	4	66	LEVELING SCREW	4
27	GUIDE ROLLER	4	67	HEX NUT (M12xP1.75)	4
28	AXLE SPACER A	4	68	FLAT WASHER (Ø12.2xØ23x2)	4
29	SOCKET CAP SCREW (M8x16xP1.25)	4	69	BULLS-EYE LEVEL	1
30	SOCKET CAP SCREW (M5x20xP0.8)	1	70	N/A	-
31	FLAT WASHER (Ø5xØ12x1)	1	71	FENCE	1
32	DETENT UNIT (M8x16.75xP1.25)	2	72	BRACING COLLAR-L	3
33	CARRIAGE LOCK	1	73	TURNBUCKLE SHAFT (M14xP2.0x60L)	3
34	CARRIAGE LOCK LEVER	1	74	BRACING COLLAR-R	3
35	FLAT HEAD MACHINE SCREW (M4x6xP0.7)	2	75	SOCKET SET SCREW (M5x6xP0.8)	12
36	CRANK HANDLE	1	76	T-HANDLE VISE SCREW (M16xP2.0)	1
37	SOCKET CAP SCREW (M5x10xP0.8)	6	77	AUXILIARY HANDLE SET	1
38	COLUMN CAP	1	77-1	FRONT HANDLE	1
39	COLUMN (2000MM)	1	77-2	SOCKET CAP SCREW (M12x16xP1.75)	2
40	BASE	1	77-3	COLUMN CAP	1
41	SHOULDER BOLT	2	77-4	SOCKET CAP SCREW (M5x35xP0.8)	4
42	FLAT WASHER (5/8"xØ30x3)	2			

Exploded View (350mm/1M Model)

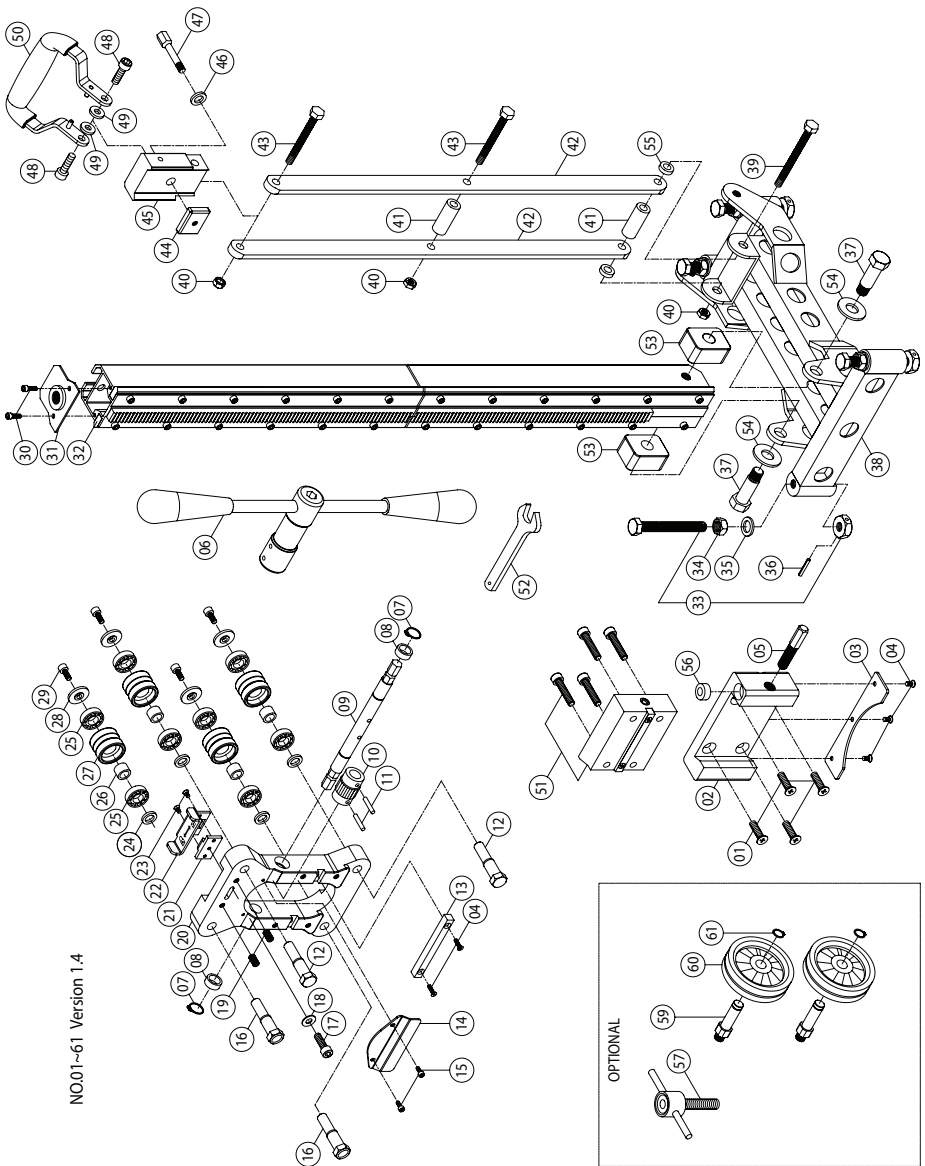


NO.01~61 Version 1.8

Parts List (350mm/1M Model)

NO.	Parts Name	Q'TY	NO.	Parts Name	Q'TY
1	FLAT HEAD SOCKET CAP SCREW (M8x30xP1.25)	4	32	COLUMN (900MM)	1
2	CRADLE	1	33	LEVELING SCREW	4
3	CRADLE PLATE	1	34	HEX NUT (M12xP1.75)	4
4	FLAT HEAD MACHINE SCREW (M5x10xP0.8)	5	35	FLAT WASHER (Ø12.2xØ23x2)	4
5	CRADLE LOCK BOLT (M12xP1.75x70L)	1	36	ROLL PIN (Ø4x25)	4
6	CRANK HANDLE	1	37	SHOULDER BOLT	2
7	EXTERNAL CIRCLIP (S-15)	2	38	BASE	1
8	BUSHING (Ø15xØ20x10)	2	39	HEX BOLT (M10x100LxP1.5)	1
9	CRANK SPINDLE	1	40	NYLOCK NUT (M10xP1.5)	3
10	CRANK GEAR (M1.5x16T)	1	41	SPACER	2
11	ROLL PIN (Ø5x25)	2	42	CONNECTING SUPPORT	2
12	AXLE SHAFT	2	43	HEX BOLT (M10x75LxP1.5)	2
13	MOUNTING TENON (10x10x100)	1	44	LOCK PLATE	1
14	FENCE	1	45	BUTTRESS LOCK	1
15	SOCKET CAP SCREW (M5x8xP0.8)	2	46	FLAT WASHER (Ø10xØ23x2)	1
16	ECCENTRIC SHAFT	2	47	ANGLE LOCK CLAMP	1
17	SOCKET CAP SCREW (M5x20xP0.8)	1	48	SOCKET CAP SCREW (M8x16xP1.25)	2
18	FLAT WASHER (Ø5xØ12x1)	1	49	FLAT WASHER (Ø8xØ20x3)	2
19	DETENT UNIT (M8x16.75xP1.25)	2	50	FRONT HANDLE	1
20	CARRIAGE	1	51	MOUNTING SPACER	1
21	CARRIAGE LOCK	1	52	WRENCH (M19)	1
22	CARRIAGE LOCK LEVER	1	53	FOOT PLATE	2
23	FLAT HEAD MACHINE SCREW (M4x6xP0.7)	2	54	FLAT WASHER (5/8"xØ30x3)	2
24	AXLE SPACER B	4	55	SPACER	2
25	BALL BEARING (6001)	8	56	BULLS-EYE LEVEL	1
26	AXLE SPACER C	4	57	T-HANDLE VISE SCREW (M16xP2.0)	1
27	GUIDE ROLLER	4	58	N/A	-
28	AXLE SPACER A	4	59	ROLLER AXLE	2
29	SOCKET CAP SCREW (M6x16xP1.0)	4	60	WHEEL	2
30	SOCKET CAP SCREW (M5x10xP0.8)	2	61	EXTERNAL CIRCLIP (S-13)	2
31	COLUMN CAP	1			

Exploded View (350mm/1.5M Model)

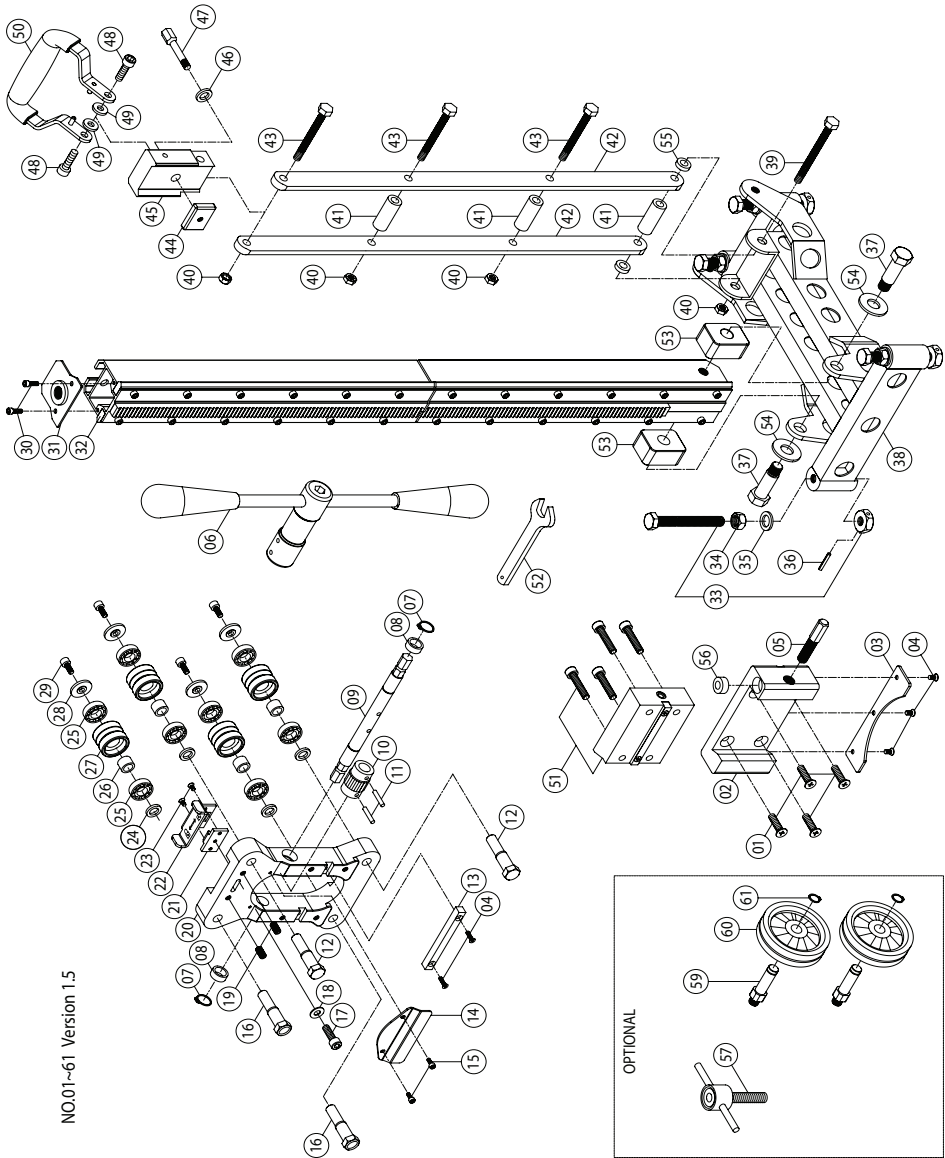


NO.01~61 Version 1.4

Parts List (350mm/1.5M Model)

NO.	Parts Name	Q'TY	NO.	Parts Name	Q'TY
1	FLAT HEAD SOCKET CAP SCREW (M8x30xP1.25)	4	32	COLUMN (1500MM)	1
2	CRADLE	1	33	LEVELING SCREW	4
3	CRADLE PLATE	1	34	HEX NUT (M12xP1.75)	4
4	FLAT HEAD MACHINE SCREW (M5x10xP0.8)	5	35	FLAT WASHER (Ø12.2xØ23x2)	4
5	CRADLE LOCK BOLT (M12xP1.75x70L)	1	36	ROLL PIN (Ø4x25)	4
6	CRANK HANDLE	1	37	SHOULDER BOLT	2
7	EXTERNAL CIRCLIP (S-15)	2	38	BASE	1
8	BUSHING (Ø15xØ20x10)	2	39	HEX BOLT (M10x100LxP1.5)	1
9	CRANK SPINDLE	1	40	NYLOCK NUT (M10xP1.5)	3
10	CRANK GEAR (M1.5x16T)	1	41	SPACER	2
11	ROLL PIN (Ø5x25)	2	42	CONNECTING SUPPORT	2
12	AXLE SHAFT	2	43	HEX BOLT (M10x75LxP1.5)	2
13	MOUNTING TENON (10x10x100)	1	44	LOCK PLATE	1
14	FENCE	1	45	BUTTRESS LOCK	1
15	SOCKET CAP SCREW (M5x8xP0.8)	2	46	FLAT WASHER (Ø10xØ23x2)	1
16	ECCENTRIC SHAFT	2	47	ANGLE LOCK CLAMP	1
17	SOCKET CAP SCREW (M5x20xP0.8)	1	48	SOCKET CAP SCREW (M8x16xP1.25)	2
18	FLAT WASHER (Ø5xØ12x1)	1	49	FLAT WASHER (Ø8xØ20x3)	2
19	DETENT UNIT (M8x16.75xP1.25)	2	50	FRONT HANDLE	1
20	CARRIAGE	1	51	MOUNTING SPACER	1
21	CARRIAGE LOCK	1	52	WRENCH (M19)	1
22	CARRIAGE LOCK LEVER	1	53	FOOT PLATE	2
23	FLAT HEAD MACHINE SCREW (M4x6xP0.7)	2	54	FLAT WASHER (5/8"xØ30x3)	2
24	AXLE SPACER B	4	55	SPACER	2
25	BALL BEARING (6001)	8	56	BULLS-EYE LEVEL	1
26	AXLE SPACER C	4	57	T-HANDLE VISE SCREW (M16xP2.0)	1
27	GUIDE ROLLER	4	58	N/A	-
28	AXLE SPACER A	4	59	ROLLER AXLE	2
29	SOCKET CAP SCREW (M6x16xP1.0)	4	60	WHEEL	2
30	SOCKET CAP SCREW (M5x10xP0.8)	2	61	EXTERNAL CIRCLIP (S-13)	2
31	COLUMN CAP	1			

Exploded View (350mm/2M Model)

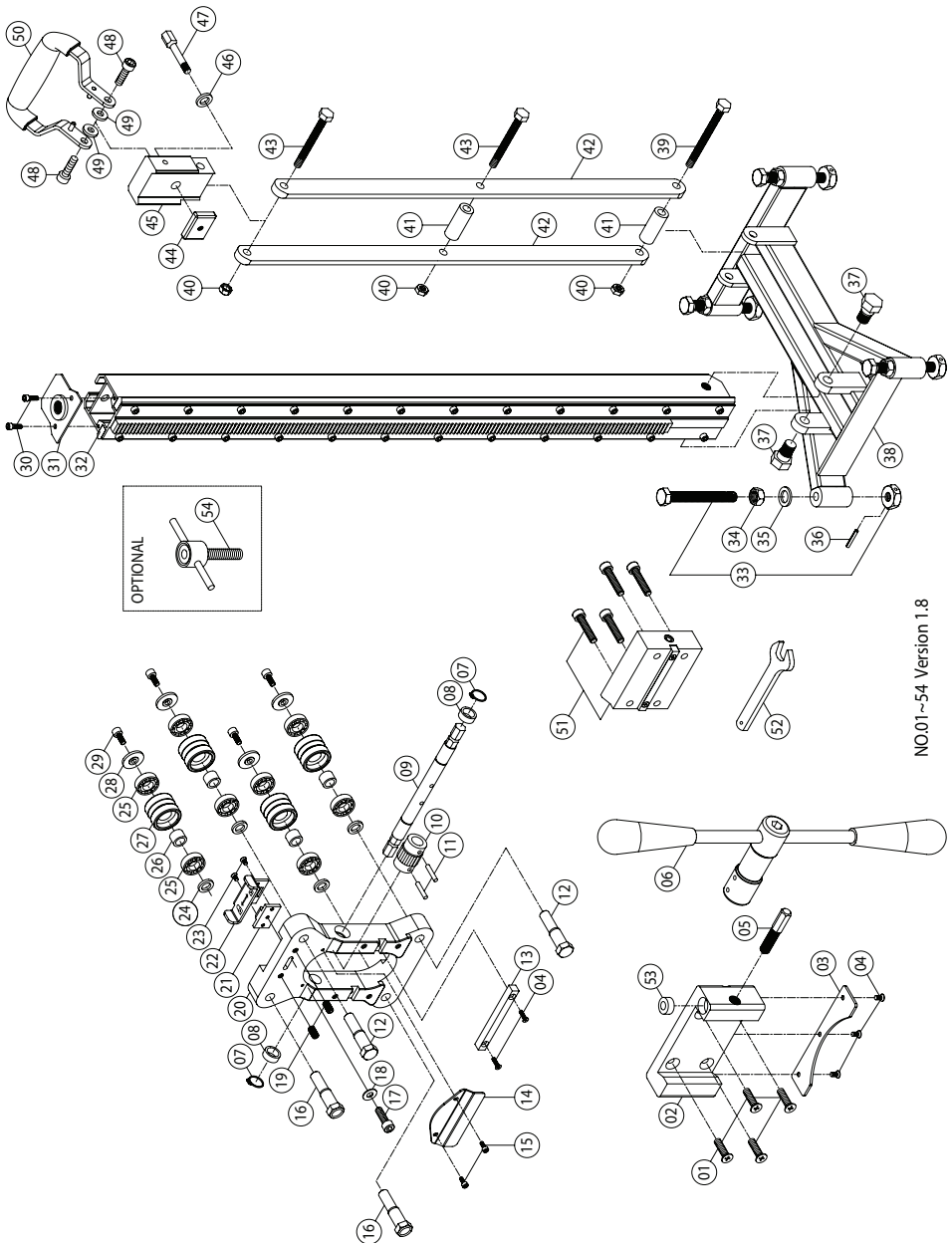


NO.01-61 Version 1.5

Parts List (350mm/2M Model)

NO.	Parts Name	Q'TY	NO.	Parts Name	Q'TY
1	FLAT HEAD SOCKET CAP SCREW (M8x30xP1.25)	4	32	COLUMN (2000MM)	1
2	CRADLE	1	33	LEVELING SCREW	4
3	CRADLE PLATE	1	34	HEX NUT (M12xP1.75)	4
4	FLAT HEAD MACHINE SCREW (M5x10xP0.8)	5	35	FLAT WASHER (Ø12.2xØ23x2)	4
5	CRADLE LOCK BOLT (M12xP1.75x70L)	1	36	ROLL PIN (Ø4x25)	4
6	CRANK HANDLE	1	37	SHOULDER BOLT	2
7	EXTERNAL CIRCLIP (S-15)	2	38	BASE	1
8	BUSHING (Ø15xØ20x10)	2	39	HEX BOLT (M10x100LxP1.5)	1
9	CRANK SPINDLE	1	40	NYLOCK NUT (M10xP1.5)	4
10	CRANK GEAR (M1.5x16T)	1	41	SPACER	3
11	ROLL PIN (Ø5x25)	2	42	CONNECTING SUPPORT	2
12	AXLE SHAFT	2	43	HEX BOLT (M10x75LxP1.5)	3
13	MOUNTING TENON (10x10x100)	1	44	LOCK PLATE	1
14	FENCE	1	45	BUTTRESS LOCK	1
15	SOCKET CAP SCREW (M5x8xP0.8)	2	46	FLAT WASHER (Ø10xØ23x2)	1
16	ECCENTRIC SHAFT	2	47	ANGLE LOCK CLAMP	1
17	SOCKET CAP SCREW (M5x20xP0.8)	1	48	SOCKET CAP SCREW (M8x16xP1.25)	2
18	FLAT WASHER (Ø5xØ12x1)	1	49	FLAT WASHER (Ø8xØ20x3)	2
19	DETENT UNIT (M8x16.75xP1.25)	2	50	FRONT HANDLE	1
20	CARRIAGE	1	51	MOUNTING SPACER	1
21	CARRIAGE LOCK	1	52	WRENCH (M19)	1
22	CARRIAGE LOCK LEVER	1	53	FOOT PLATE	2
23	FLAT HEAD MACHINE SCREW (M4x6xP0.7)	2	54	FLAT WASHER (5/8"xØ30x3)	2
24	AXLE SPACER B	4	55	SPACER	2
25	BALL BEARING (6001)	8	56	BULLS-EYE LEVEL	1
26	AXLE SPACER C	4	57	T-HANDLE VISE SCREW (M16xP2.0)	1
27	GUIDE ROLLER	4	58	N/A	-
28	AXLE SPACER A	4	59	ROLLER AXLE	2
29	SOCKET CAP SCREW (M6x16xP1.0)	4	60	WHEEL	2
30	SOCKET CAP SCREW (M5x10xP0.8)	2	61	EXTERNAL CIRCLIP (S-13)	2
31	COLUMN CAP	1			

Exploded View (250mm Model)

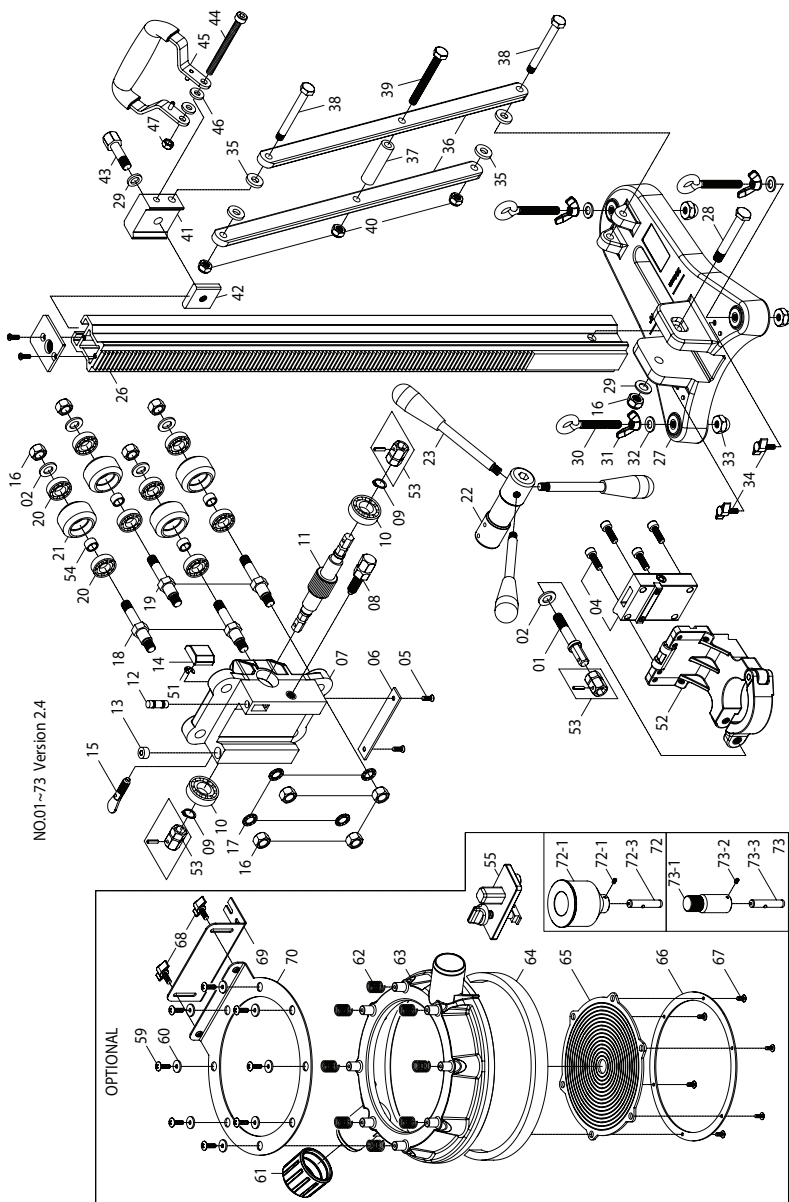


NO.01--54 Version 1.8

Parts List (250mm Model)

NO.	Parts Name	Q'TY	NO.	Parts Name	Q'TY
1	FLAT HEAD SOCKET CAP SCREW (M8x30xP1.25)	4	28	AXLE SPACER A	4
2	CRADLE	1	29	SOCKET CAP SCREW (M6x16xP1.0)	4
3	CRADLE PLATE	1	30	SOCKET CAP SCREW (M5x10xP0.8)	2
4	FLAT HEAD MACHINE SCREW (M5x12xP0.8)	5	31	COLUMN CAP	1
5	CRADLE LOCK BOLT (M12xP1.75x70L)	1	32	COLUMN (900MM)	1
6	CRANK HANDLE	1	33	LEVELING SCREW	4
7	EXTERNAL CIRCLIP (S-15)	2	34	HEX NUT (M12xP1.75)	4
8	BUSHING (Ø15xØ20x10)	2	35	FLAT WASHER (Ø12.2xØ23x2)	4
9	CRANK SPINDLE	1	36	ROLL PIN (Ø4x25)	4
10	CRANK GEAR (M1.5x16T)	1	37	SHOULDER BOLT	2
11	ROLL PIN (Ø5x25)	2	38	BASE	1
12	AXLE SHAFT	2	39	HEX BOLT (M10x90LxP1.5)	1
13	MOUNTING TENON (10x10x100)	1	40	NYLOCK NUT (M10xP1.5)	3
14	FENCE	1	41	SPACER	2
15	SOCKET CAP SCREW (M5x8xP0.8)	2	42	CONNECTING SUPPORT	2
16	ECCENTRIC SHAFT	2	43	HEX BOLT (M10x75LxP1.5)	2
17	SOCKET CAP SCREW (M5x20xP0.8)	1	44	LOCK PLATE	1
18	FLAT WASHER (Ø5xØ12x1)	1	45	BUTTRESS LOCK	1
19	DETENT UNIT (M8x16.75xP1.25)	2	46	FLAT WASHER (Ø10xØ23x2)	1
20	CARRIAGE	1	47	ANGLE LOCK CLAMP	1
21	CARRIAGE LOCK	1	48	SOCKET CAP SCREW (M8x16xP1.25)	2
22	CARRIAGE LOCK LEVER	1	49	FLAT WASHER (Ø8xØ20x3)	2
23	FLAT HEAD MACHINE SCREW (M4x6xP0.7)	2	50	FRONT HANDLE	1
24	AXLE SPACER B	4	51	MOUNTING SPACER	1
25	BALL BEARING (6001)	8	52	WRENCH (M19)	1
26	AXLE SPACER C	4	53	BULLS-EYE LEVEL	1
27	GUIDE ROLLER	4	54	T-HANDLE VISE SCREW (M16xP2.0)	1

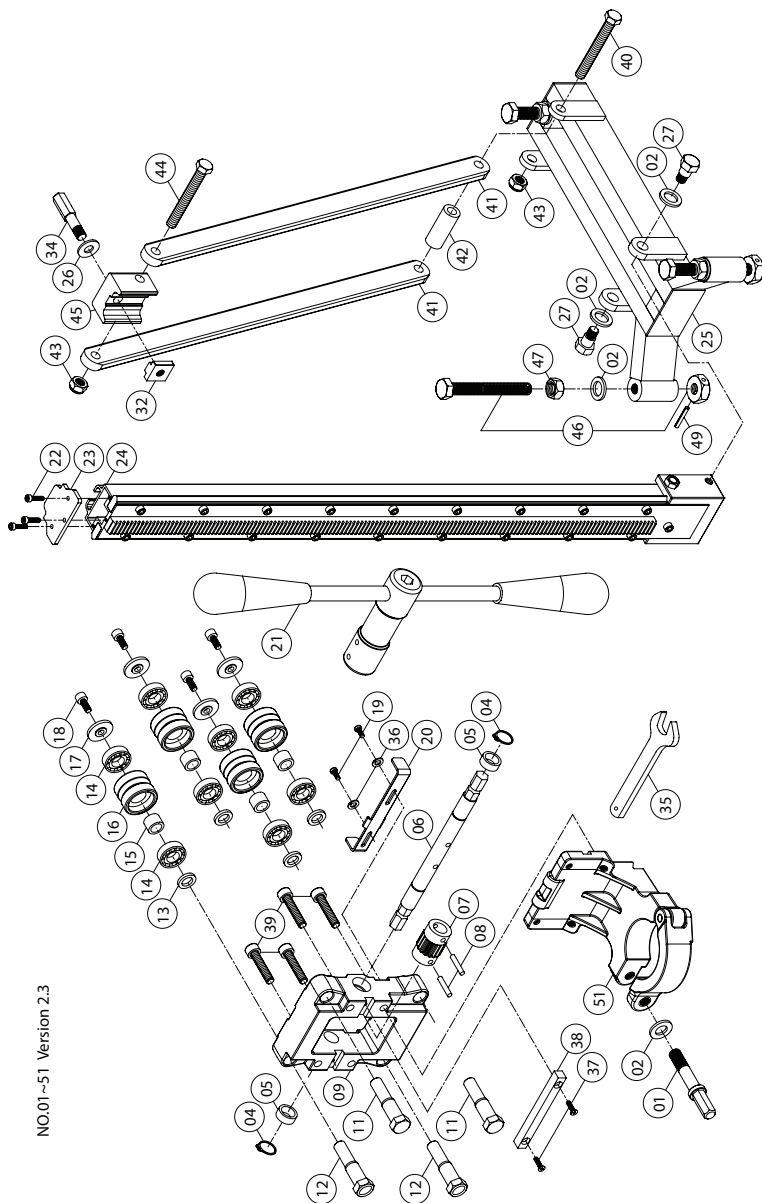
Exploded View (200mm Model)



Parts List (200mm Model)

NO.	Parts Name	Q'TY	NO.	Parts Name	Q'TY
1	CLAMP SCREW (M12)	1	36	BUTTRESS BAR	2
2	FLAT WASHER (1/2"xØ23x2)	5	37	SPACER	1
3	N/A	-	38	PIVOT BOLT	2
4	MOUNTING SPACER	1	39	HEX BOLT (M10x95LxP1.5)	1
5	FLAT HEAD MACHINE SCREW (M5x12xP0.8)	4	40	NYLOCK NUT (M10xP1.5)	3
6	CRADLE PLATE	1	41	BUTTRESS LOCK	1
7	CARRIAGE (GRAY-RAL7016)	1	42	LOCK PLATE	1
8	LOCK SCREW	1	43	ANGLE LOCK CLAMP	1
9	EXTERNAL CIRCLIP (S-15)	2	44	SOCKET CAP SCREW (M8x85xP1.25)	1
10	BALL BEARING (6002)	2	45	FRONT HANDLE	1
11	CRANK SPINDLE	1	46	FLAT WASHER (Ø8xØ20x3)	2
12	BUBBLE LEVEL	1	47	NYLOCK NUT (M8xP1.25)	1
13	BULLS-EYE LEVEL	1	48~50	N/A	-
14	PLASTIC PAD	1	51	E-CLIP (E-7)	1
15	SWIVEL LOCK TAB (M10xP1.5)	1	52	CLAMP BRACKET (Ø60)	1
16	NYLOCK NUT (M12xP1.75)	9	53	HEX ADAPTOR	3
17	EXTERNAL STAR WASHER (M12)	4	54	HEAD LOCKING KNOB (Ø12xØ16x9.1)	4
18	ECCENTRIC SHAFT	2	55	EXTENSION MAST BRACKET	1
19	ROLLER AXLE	2	56~58	N/A	-
20	BALL BEARING (6201)	8	59	SOCKET CAP SCREW (M5x12xP0.8)	8
21	GUIDE ROLLER	4	60	FLAT WASHER (Ø5xØ19x1.2)	8
22	CRANK BOSS	1	61	END CAP	1
23	CRANK HANDLE	3	62	SPRING (Ø0.7xØ12xØ15x5Tx21L)	8
24	N/A	-	63	WATER COLLECTOR BODY	1
25	COLUMN CAP PLATE	1	64	SEAL(760MM)	1
26	COLUMN	1	65	MEMBRANE	3
27	BASE	1	66	MOUNTING RING	1
28	PIVOT BOLT	1	67	TRUSS HEAD MACHINE SCREW (M3x10xP0.5)	6
29	FLAT WASHER (Ø12xØ23x2.0)	2	68	THUMB SCREW (M6x16xP1.0)	2
30	EYE BOLT	3	69	ANGLE BRACKET	1
31	WING NUT (M10xP1.5)	3	70	RING BRACKET	1
32	FLAT WASHER (Ø10xØ23x2)	3	71	N/A	-
33	ACORN NUT (M10xP1.5)	3	72	LASER CONNECTOR SET(1 1/4"-7)	1
34	THUMB SCREW (M6x16xP1.0)	2	73	LASER CONNECTOR SET(1/2"BSP)	1
35	FLAT WASHER	4	OP1	ANCHORING PLATE	1

Exploded View (170mm Model)

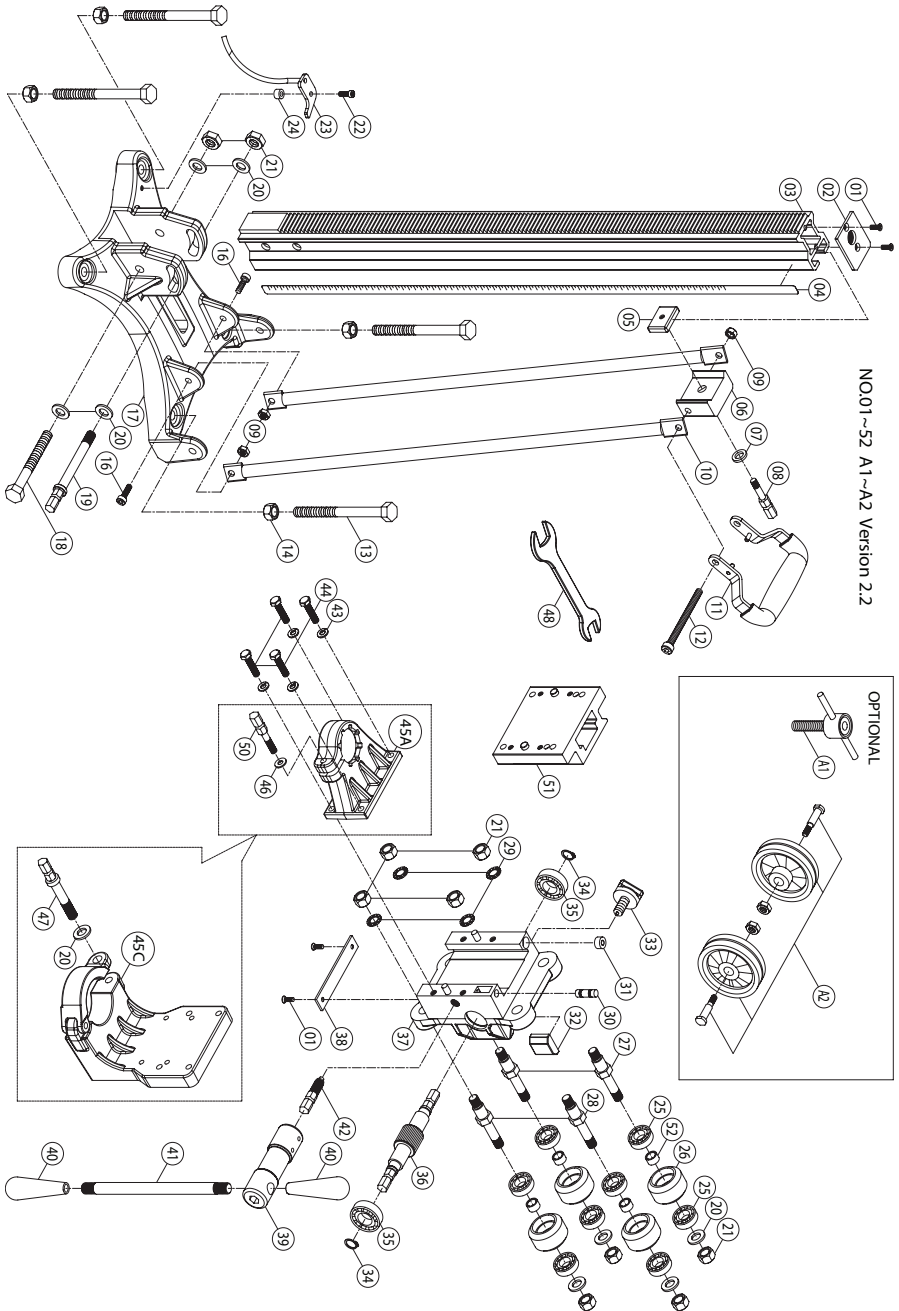


NO.01 ~51 Version 2.3

Parts List (170mm Model)

NO.	Parts Name	Q'TY	NO.	Parts Name	Q'TY
1	TURNBUCKLE SHAFT (M12)	1	25	BASE	1
2	FLAT WASHER (Ø12.2xØ23x2)	6	26	FLAT WASHER (Ø10xØ23x2)	1
3	N/A	-	27	SHOULDER BOLT	2
4	EXTERNAL CIRCLIP (S-15)	2	28~31	N/A	-
5	BUSHING (Ø15xØ20x10)	2	32	LOCK PLATE	1
6	CRANK SPINDLE	1	33	N/A	-
7	CRANK GEAR (M1.5x16T)	1	34	ANGLE LOCK CLAMP	1
8	ROLL PIN (Ø5x25)	2	35	WRENCH (M19)	1
9	CARRIAGE	1	36	SPRING WASHER (M4)	2
10	N/A	-	37	FLAT HEAD MACHINE SCREW (M5x12xP0.8)	5
11	AXLE SHAFT	2	38	MOUNTING TENON (10x10x100)	1
12	ECCENTRIC SHAFT	2	39	SOCKET CAP SCREW (M8x30xP1.25)	4
13	AXLE SPACER B	4	40	HEX BOLT (M10x90LxP1.5)	1
14	BALL BEARING (6001)	8	41	CONNECTING SUPPORT	2
15	AXLE SPACER C	4	42	SPACER	1
16	GUIDE ROLLER	4	43	NYLOCK NUT (M10xP1.5)	2
17	AXLE SPACER A	4	44	HEX BOLT (M10x75LxP1.5)	1
18	SOCKET CAP SCREW (M6x16xP1.0)	4	45	BUTTRESS LOCK	1
19	TRUSS HEAD MACHINE SCREW (M4x10xP0.7)	2	46	LEVELING SCREW	3
20	CARRIAGE LOCK LEVER	1	47	HEX NUT (M12xP1.75)	3
21	CRANK HANDLE	1	48	N/A	-
22	SOCKET CAP SCREW (M4x10xP0.7)	3	49	ROLL PIN (Ø4x25)	3
23	COLUMN CAP	1	50	N/A	-
24	COLUMN (730MM)	1	51	CRADLE CLAMP BRACKET (Ø60)	1

Exploded View (250mm Aluminum Model)



NO.01~52 A1~A2 Version 2.2

Parts List (250mm Aluminum Model)

NO.	Parts Name	Q'TY	NO.	Parts Name	Q'TY
1	FLAT HEAD MACHINE SCREW (M5x10xP0.8)	4	29	EXTERNAL STAR WASHER (M12)	4
2	COLUMN CAP PLATE	1	30	BUBBLE LEVEL	1
3	COLUMN	1	31	BULLS-EYE LEVEL	1
4	MITER SCALE	1	32	REVERTER PLACE	1
5	LOCK PLATE	1	33	THUMB SCREW (M8x30)	1
6	BUTTRESS LOCK	1	34	EXTERNAL CIRCLIP (S-15)	2
7	FLAT WASHER (5/16"xØ17x1.5)	1	35	BALL BEARING (6002)	2
8	ANGLE LOCK CLAMP	1	36	CRANK SPINDLE	1
9	NYLOCK NUT (M8xP1.25)	3	37	CRADLE	1
10	BUTRESS BAR	2	38	CRADLE PLATE	1
11	FRONT HANDLE	1	39	CRANK BOSS	1
12	SOCKET CAP SCREW (M8x85xP1.25)	1	40	CRANK GRIP	2
13	HEX BOLT (M12x75LxP1.75)	4	41	HANDLE	1
14	HEX NUT (M12xP1.75)	4	42	PIVOT PIN	1
15	N/A	-	43	SPRING WASHER (M8)	4
16	SOCKET CAP SCREW (M8x25xP1.25)	2	44	HEX BOLT (M8x30xP1.25)	4
17	BASE	1	45A	SIDE HANDLE BRACKET (Ø44)	1
18	HEX BOLT (M12x100LxP1.75)	1	45C	CRADLE CLAMP BRACKET (Ø60)	1
19	SET SCREW	1	46	FLAT WASHER (Ø8xØ14x2)	1
20	FLAT WASHER (Ø12xØ24x2.5)	9	47	TURNBUCKLE SHAFT (M12)	1
21	NYLOCK NUT (M12xP1.75)	10	48	WRENCH (M17/M19)	1
22	SOCKET CAP SCREW (M6x20xP1.0)	1	49	N/A	-
23	CENTER INDICATOR	1	50	TURNBUCKLE SHAFT (M8)	1
24	HEAD LOCKING KNOB (Ø6.1xØ10x8)	1	51	MOUNTING SPACER	1
25	BALL BEARING (6201)	8	52	HEAD LOCKING KNOB (Ø12xØ16x9.1)	4
26	GUIDE ROLLER	4	A1	T-HANDLE VISE SCREW (M16xP2.0)	1
27	ECCENTRIC SHAFT	2	A2	WHEEL ASSEMBLY	1
28	ROLLER AXLE	2			

